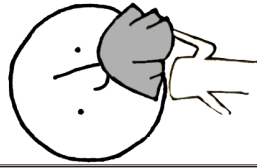
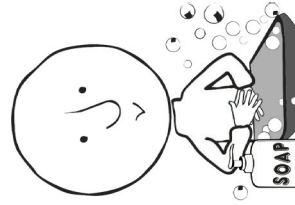
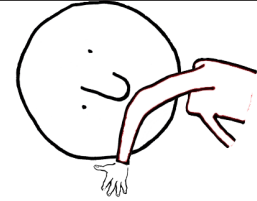


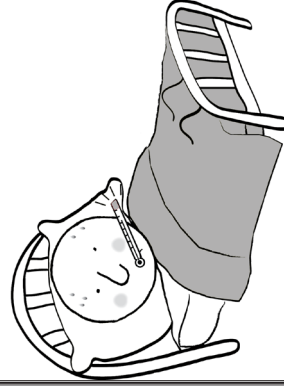
# Борьба с гриппом



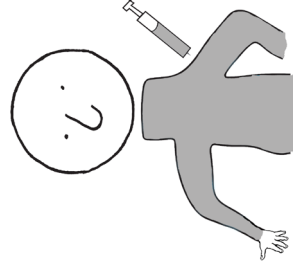
Прикрывайте рот и нос,  
когда кашляете.



Мойте руки.

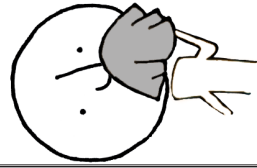


Оставайтесь дома,  
если заболели.

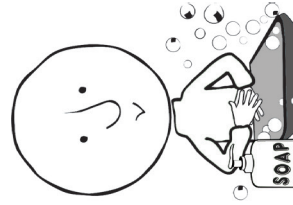
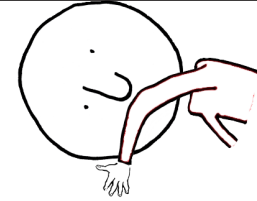


Сделайте прививку.

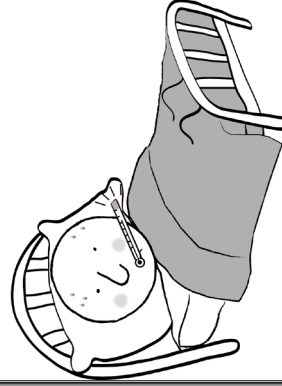
# Борьба с гриппом



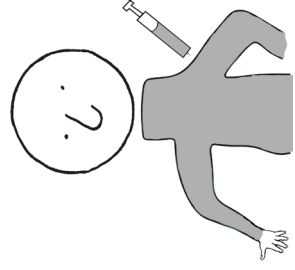
Прикрывайте рот и нос,  
когда кашляете.



Мойте руки.

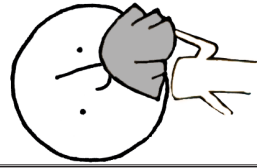


Оставайтесь дома,  
если заболели.

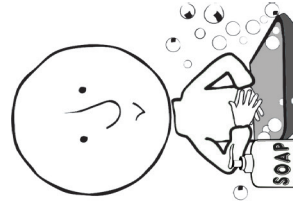
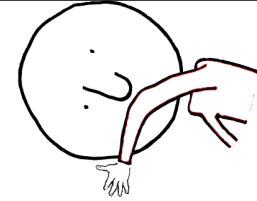


Сделайте прививку.

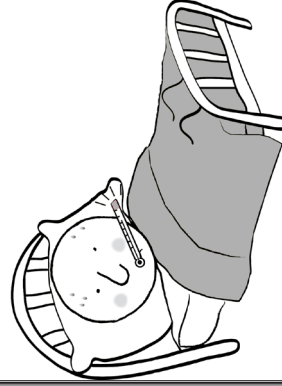
# Борьба с гриппом



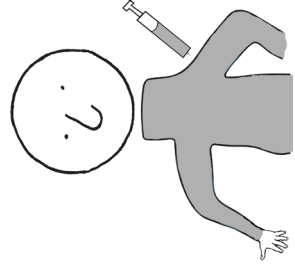
Прикрывайте рот и нос,  
когда кашляете.



Мойте руки.

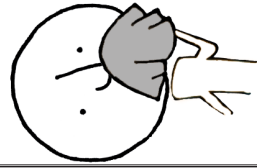


Оставайтесь дома,  
если заболели.

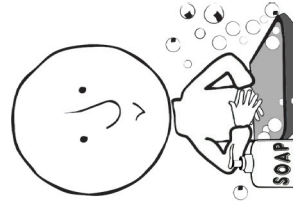
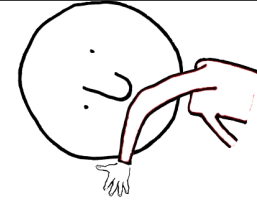


Сделайте прививку.

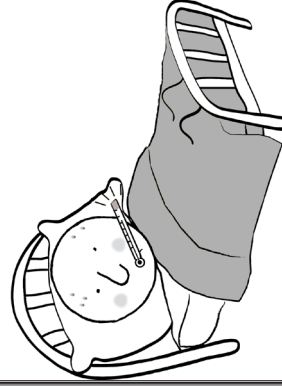
# Борьба с гриппом



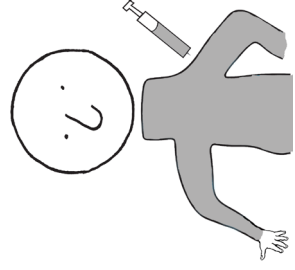
Прикрывайте рот и нос,  
когда кашляете.



Мойте руки.



Оставайтесь дома,  
если заболели.



Сделайте прививку.

# FIGHT the FLU

**Борьба с гриппом**

Questions about flu?

Minnesota Department  
of Health

[www.mdhflu.com](http://www.mdhflu.com)

Centers for Disease Control

[www.cdc.gov](http://www.cdc.gov)

1-800-CDC-INFO  
(800-232-4636)

TTY: 1-888-232-6348

24 hours/every day

Your city or county public  
health department

# FIGHT the FLU

**Борьба с гриппом**

Questions about flu?

Minnesota Department  
of Health

[www.mdhflu.com](http://www.mdhflu.com)

Centers for Disease Control

[www.cdc.gov](http://www.cdc.gov)

1-800-CDC-INFO  
(800-232-4636)

TTY: 1-888-232-6348

24 hours/every day

Your city or county public  
health department

# FIGHT the FLU

**Борьба с гриппом**

Questions about flu?

Minnesota Department  
of Health

[www.mdhflu.com](http://www.mdhflu.com)

Centers for Disease Control

[www.cdc.gov](http://www.cdc.gov)

1-800-CDC-INFO  
(800-232-4636)

TTY: 1-888-232-6348

24 hours/every day

Your city or county public  
health department

# FIGHT the FLU

**Борьба с гриппом**

Questions about flu?

Minnesota Department  
of Health

[www.mdhflu.com](http://www.mdhflu.com)

Centers for Disease Control

[www.cdc.gov](http://www.cdc.gov)

1-800-CDC-INFO  
(800-232-4636)

TTY: 1-888-232-6348

24 hours/every day

Your city or county public  
health department