

Health Policy Division Staff and Organization List

MAY 7, 2024

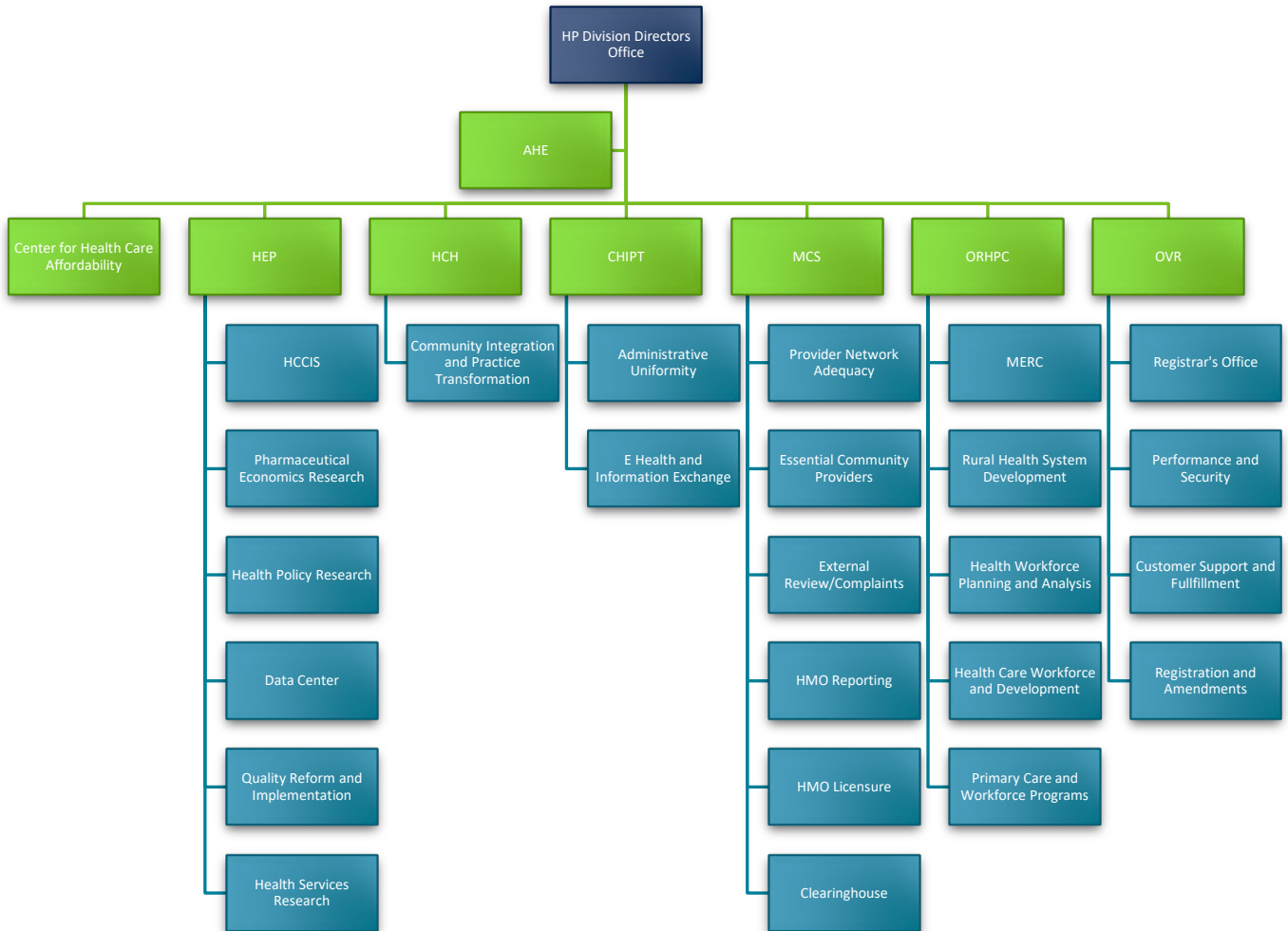


Table of Contents

- Health Policy Division Staff Organization List 1
 - Division Director’s Office 2
 - Adverse Events Reporting..... 2
 - Center for Health Information Policy and Transformation (CHIPT) 2
 - Administrative Uniformity 2
 - E Health and Health Information Exchange..... 2
 - Center for Health Care Affordability..... 2
 - Health Care Homes (HCH)..... 2
 - System Development..... 2
 - Community Integration and Practice Transformation..... 3
 - Health Economics Program (HEP)..... 3
 - Minnesota Health Care Cost Information System (HCCIS) 3
 - Pharmaceutical Economics Research 3
 - Health Policy Research..... 3
 - Data Center 4
 - Quality Reform Implementation..... 4
 - Health Services Research 4
 - Managed Care Systems (MCS) 4
 - Clearinghouse 5
 - Office of Rural Health and Primary Care (ORHPC)..... 5
 - MERC (Health Care Workforce and Education) 5
 - Rural Health System Development/Trauma..... 5
 - Health Workforce Planning and Analysis..... 5
 - Health Care Workforce and Development 6
 - Primary Care and Workforce Programs..... 6
 - Office of Vital Records (OVR) 6
 - Registrar’s Office..... 6
 - Performance and Security 7
 - Customer Support and Fulfillment 7
 - Registration and Fulfillment 7
 - Health Policy MN.IT Services 7

Division Director's Office

- **Division Director:** Diane Rydrych
- **Assistant Division Director:** Susan Castellano
 - **Health Policy Specialist:** Tara Borton
 - **Financial Management:** Barb Fischer
 - **Information and Communications Coordinator:** Morgan (Foster) Powers

Adverse Events Reporting (AHE)

- **Program Director:** Rachel Jokela

Center for Health Information Policy and Transformation (CHIPT)

- **Program Manager:** Jennifer Fritz
 - Susie Blake
 - Sarah Shaw

Administrative Uniformity

- **Supervisor:** Jennifer Fritz
 - Dave Haugen

E Health and Health Information Exchange

- **Supervisor:** Karen Soderberg
 - Bilqis Amatus-Salaam
 - Kari Guida
 - Anne Schloegel

Center for Health Care Affordability

- **Supervisor:** Vacant
 - Vacant

Health Care Homes (HCH)

- **Program Manager:** David Kurtzon

System Development

- **Supervisor:** Vacant (David Kurtzon)
 - Georgia Anderson
 - Joan Kindt
 - Jennifer Strickland
 - Tina Peters
 - Lisa Behr

Community Integration and Practice Transformation

- **Supervisor:** Rosemarie Rodriguez-Hager
 - Sadie Anderson
 - Carol Bauer
 - Dorothy Hull

Health Economics Program (HEP)

- **Program Director:** Stefan Gildemeister
- **Program Deputy Director:** Cara Bailey
 - Kristen Ackert
 - Diane Hammond
 - Kelsey Schaenzer

Minnesota Health Care Cost Information System (HCCIS)

- **Supervisor:** Cara Bailey
 - Tracy Johnson

Pharmaceutical Economics Research

- **Supervisor:** Annelisa Steeber
 - Margaret Darling
 - Sean MacDonnel
 - David Raatz
 - Melissa Walker, *Contractor*

Health Policy Research

- **Supervisor:** Vacant (Stefan Gildemeister and Cara Bailey)
 - Lucas Foley
 - Nathan Hierlmaier

- Marco Morales
- Kathleen Panas
- Renee Saarela
- Michelle Wilson
- Rachel Wittkopp, *Student Worker*

Data Center

- **Supervisor:** Karl Fenstrom
 - Michael Adams
 - Jenn Baarson
 - Erinn Sanstead

Quality Reform Implementation

- **Supervisor:** Denise McCabe
 - Rachel Cahoon
 - Sarah Evans
 - David Hesse
 - Kelsey Kannenberg

Health Services Research

- **Director:** Pam Mink
 - Michael Burian
 - Beth Egan
 - Astrid Knott
 - Ben Nicla

Managed Care Systems (MCS)

- **Program Manager:** Julie Erickson
- **Assistant Program Manager:** Alisha Simon
 - Dena Harrell
 - Tamika Howard, *Contractor*
 - Mekibib Hirpo
 - Kirsten Peterson
 - Michelle Stein

- Brenda Sorvig
- Mary Timm

Clearinghouse

- Cheryl Jacobson

Office of Rural Health and Primary Care (ORHPC)

- **Program Manager:** Zora Radosevich
 - Yende Anderson
 - Maria Rogness, Health Program Rep Senior

MERC (Health Care Workforce and Education)

- **Supervisor:** Zora Radosevich
 - Diane Reger

Rural Health System Development/Trauma

- **Deputy Director:** Tim Held
 - Cirrie Byrnes
 - Emma Distel
 - Maria Flor
 - LynMarie Harris
 - Tammy Peterson
 - Gina Vue
 - Grace Liu, student worker
 - Olivia Houck
 - Dee Telkamp

Health Workforce Planning and Analysis

- **Supervisor:** Nitika Moibi
 - Kelsey Besse
 - Teri Fritsma
 - Lillian Norman, *student worker*
 - Kevan O'Hanlon, student worker
 - Valerie Stofferahn
 - Megan Loew

- Madison Weirick

Health Care Workforce and Development

- **Supervisor:** Ann Linde
 - Siham Abdellah
 - Roble Aden
 - Robin Bly
 - Zoe Hill
 - Melanie Innes
 - Erik Larson
 - Joanne Madrid
 - Samantha Rowbottom
 - Renee Richie
 - Addie Engebretson

Primary Care and Workforce Programs

- **Supervisor:** Laura Sutter
 - Rebekah Ehlebracht
 - Elizabeth Fenske
 - Brenda Flattum
 - Janet Howard
 - Daniel Merkl
 - Liza Root, *contractor*
 - Sarah Grafstrom

Office of Vital Records (OVR)

- **Program Manager:** Molly Crawford

Registrar's Office

- **Supervisor:** Molly Crawford
 - Mary L Connor
 - Heidi Granlund
 - Dylan Slivik
 - Sarah Ryan

- Shonda Wright

Performance and Security

- **Supervisor:** Anne Kleppe
 - Sally Almond
 - Nancy Bollman
 - Cheri Denardo
 - Justin Maine
 - Carl Heydel

Customer Support and Fulfillment

- **Supervisor:** Bill Devine
 - Jose Andrade
 - Melanie Charpentier
 - Shelly Eichenlaub
 - Jesse Govaert
 - Michael Fanslow
 - Sharon Mitchell
 - Mary Roguski

Registration and Fulfillment

- **Supervisor:** Krista Bauer
 - Lead: Maria Schaff
 - James Andre
 - Jean Cocchiarella
 - Kimberly Dodge
 - Aura Mendoza Alburgueque
 - Jean Garman
 - Maureen Sheehy-Kustaa

Health Policy MN.IT Services

- **Supervisor:** Rohit Saxena
 - Trung Nguyen
 - Jason Tillman

HEALTH POLICY STAFF

- Doug Wheeler
- Tony Yang
- Hung Nguyen
- Yang Yang

Minnesota Department of Health
Health Policy Division
PO Box 64975
St. Paul, MN 55164-0975
www.health.state.mn.us

To obtain this information in a different format, call: 651-201-3560